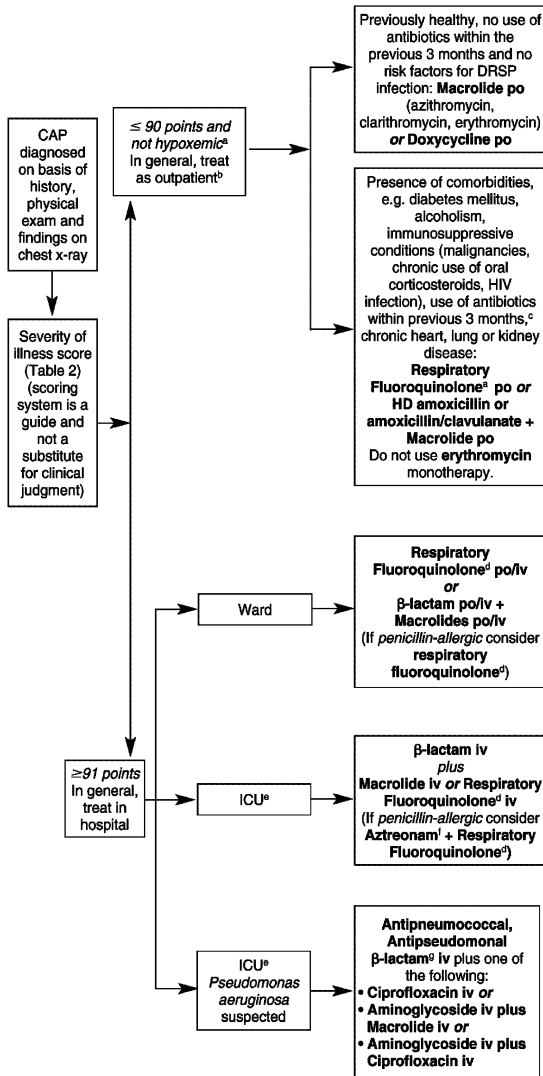


Figure 1: Initial Management of Community-acquired Pneumonia (CAP)



^a Approximately 20% of patients in this category will require admission.¹
^b Psychosocial and medical factors, e.g., can reliably take oral medications, exacerbation of underlying disease (diabetes, COPD, heart failure), homelessness, may influence the decision to admit.
^c For patients who have received an antibiotic within the past three months, use another class of antibiotics.
^d Respiratory fluoroquinolone: moxifloxacin, levofloxacin. Gemifloxacin is currently not approved for CAP. For hospitalized patients, the dose of levofloxacin is 750 mg once daily for 5 to 7 days.
^e Absolute indications for admittance into ICU: a) septic shock requiring vasopressors; b) acute respiratory failure requiring endotracheal intubation and mechanical ventilation.
^f Aztreonam is available through the Special Access Programme, Therapeutic Products Directorate, Health Canada
^g Cefepime, imipenem, meropenem, piperacillin/tazobactam.
 Abbreviations: DRSP = drug-resistant *S. pneumoniae*; ICU = intensive care unit