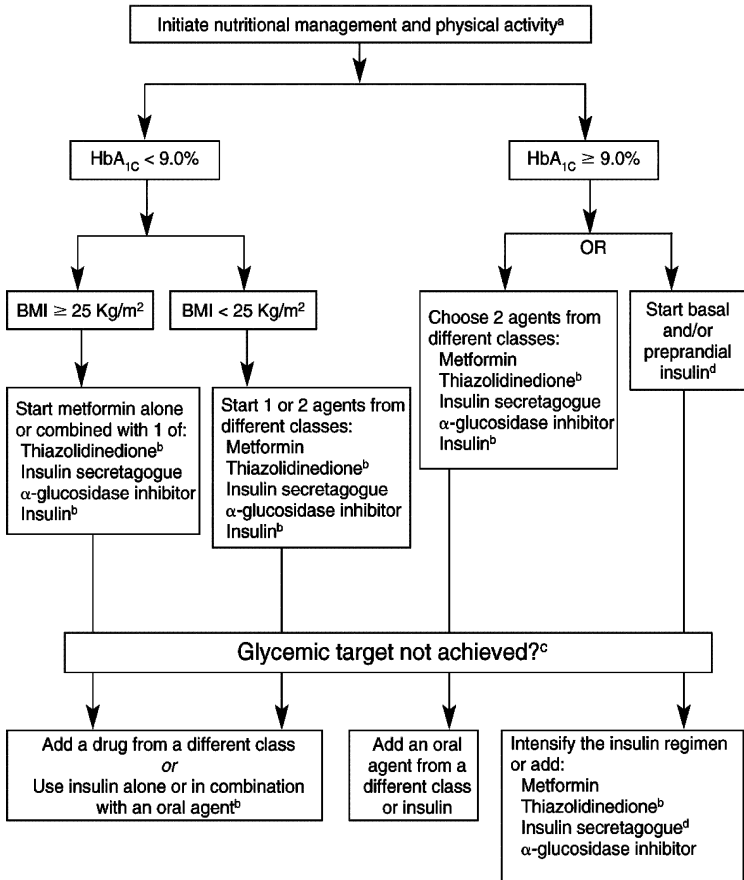


Figure 2: Stepwise Approach to Type 2 Diabetes



^a Reinforce the need to continue lifestyle interventions at every opportunity.

^b Combined use of thiazolidinediones plus insulin has not been approved by Health Canada. When used in combination with insulin, thiazolidinediones may increase the risk of edema and heart failure.

^c Drug regimens should be adjusted in a timely fashion so as to achieve the target HbA_{1c} level within 6 to 12 months.

^d If using preprandial insulin, do not use an insulin secretagogue.

Abbreviation: HbA_{1c} = glycosylated hemoglobin