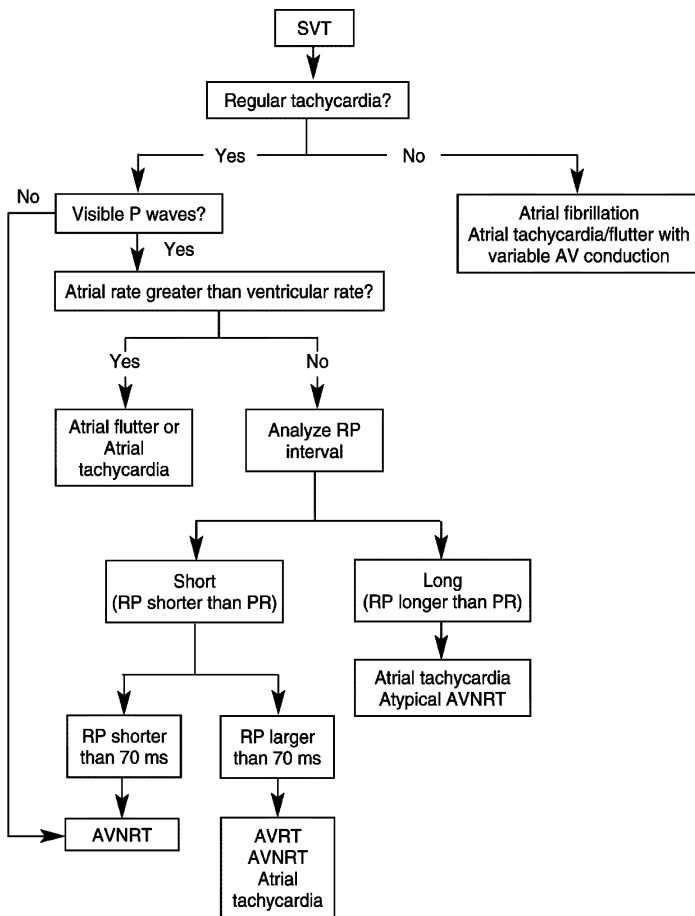


Figure 1: **Differential Diagnosis of Supraventricular Tachycardia**



Abbreviations: AV = atrioventricular; AVNRT = atrioventricular nodal re-entry tachycardia; AVRT = atrioventricular re-entry tachycardia
 Modified from *Circulation* 2003;108(15):1871-909 with permission of the American Heart Association.